



## RAIN 2025 Personal Support Vehicle (PSV) Guide

The following tips and instructions are provided for Personal Support Vehicle (PSV), or SAG, operators to assist in navigation from Terre Haute to Richmond during the course of the RAIN event. These instructions are organized chronologically. [RAIN 2025 PSV Map](#) shows the entire route the PSV should follow from Terre Haute to Richmond. It is suggested that you print or have an electronic version of this guide and map in your PSV during the event. You may pull over to the side of the road and refer to these resources as needed. Detailed descriptions and additional maps of the RAIN Start and the RAIN Finish are provided below.

A shared Google Map showing both the Rider and PSV routes is available here:



**Note on GPS Devices** – The PSV route shown here minimizes conflict with riders and is the preferred route to follow. It is therefore recommended that you do not use automotive GPS devices for PSV navigation during RAIN. An alternative procedure is to upload the shared Google Map for viewing on a smartphone. You cannot navigate this map (i.e., get turn-by-turn directions), but you can see both the rider route, the recommended PSV route, and your current position using the enabled GPS receiver in your smart phone.

**RAIN Start** – This year's RAIN Ride will start at Fairbanks Park in Terre Haute. Enter Fairbanks Park via Farrington Street. [See RAIN Start Map](#). Farrington passes the YMCA where RAIN registration and rider packet pickup is located. Limited overnight sleeping space is also available at the YMCA. Arrive early and drop your rider off either at the YMCA or at the designated rider drop off area near the RAIN starting line. Free short-term or overnight parking for RAIN is available at the Vigo County Government Annex Building on Oak Street. This area is close to restroom facilities and the RAIN starting line. As shown on the map, one-way traffic is encouraged in Fairbanks Park during the start of RAIN. Enter via Farrington Street and exit via Oak Street.

After the start of RAIN, please follow Oak Street east from the parking area to US 41 / SR 150 (Third Street) and then south on US 41 to I-70 along the designed PSV route. See [RAIN 2025 PSV Map](#). Following this route, you will pass the large number of motor lodges near the US 41 / I-70 interchange. If you are staying in this area, consider dropping your rider off at Fairbanks Park and then returning to your lodging for a leisurely checkout. You will have plenty of time to

meet your rider down the road. Do not follow your rider on the route east through Terre Haute on Ohio Street as this creates added congestion on city streets.

From the US 41 / I-70 interchange, follow I-70 east 34 miles east to the US 231 interchange. Exit north on US 231 and proceed north 3.5 miles to US 40.

**Rest Stop 1** – Unfortunately, construction at South Putnam High School prevents RAIN from using this facility as a rest stop in 2025. The Abundant Life Baptist Church located west of the US 40 / US 231 intersection at rider mile 32 is Rest Stop 1 this year. PSV parking is not available at Rest Stop 1. Please do not attempt to visit Rest Stop 1 or park along the US 40 or SR 236 roadway or shoulders near the rest stop as this obstructs traffic and rider visibility and is a traffic offense. PSVs may follow US 40 east from US 231 to Plainfield and Rest Stop 2 and meet their rider at any safe road intersection along that portion of US 40.

**Rest Stop 2** – Rider Mile 59, Plainfield Middle School. PSVs and riders will approach Rest Stop 2 along different routes See [RAIN 2025 PSV Map](#). In Plainfield, PSVs will continue east on US 40 past the signed rider turnoff at Vestal Road. PSVs will turn right on Simmons Street and follow the signed route to Rest Stop 2 along Simmons and Stafford Streets to enter the rest stop from the east. Ample parking is available in the school parking lots. Park only in the designated areas on school property. You may meet your rider at this point. Exit Rest Stop 2 in the direction you came and follow the RAIN PSV directional signs back to US 40. PSVs ARE NOT PERMITTED ON THE RAIN ROUTE EAST OF PLAINFIELD due to the narrow nature of the rural roadways.

**Lunch Stop** – Rider Mile 88, Franklin Township Schools. From Plainfield, follow US 40 east to I-465. On 7/12/24 I-465 was closed between I-65 and I-74 on the southeast side of Indianapolis for repair work. It is anticipated to be closed for the RAIN Ride. To reach the Lunch Stop, exit I-465 at I-65 and follow I-65 south to the Southport Road exit. Take Southport Road east to Franklin Road, turn left on Franklin Road and proceed north to the Lunch Stop. See [RAIN 2025 PSV Map](#). You may meet your rider for lunch at this point. Ample parking is available in the school parking lots. Park only in the designated areas on school property. Do not park along Edgewood Avenue north of the school, or along Franklin Road west of the school.

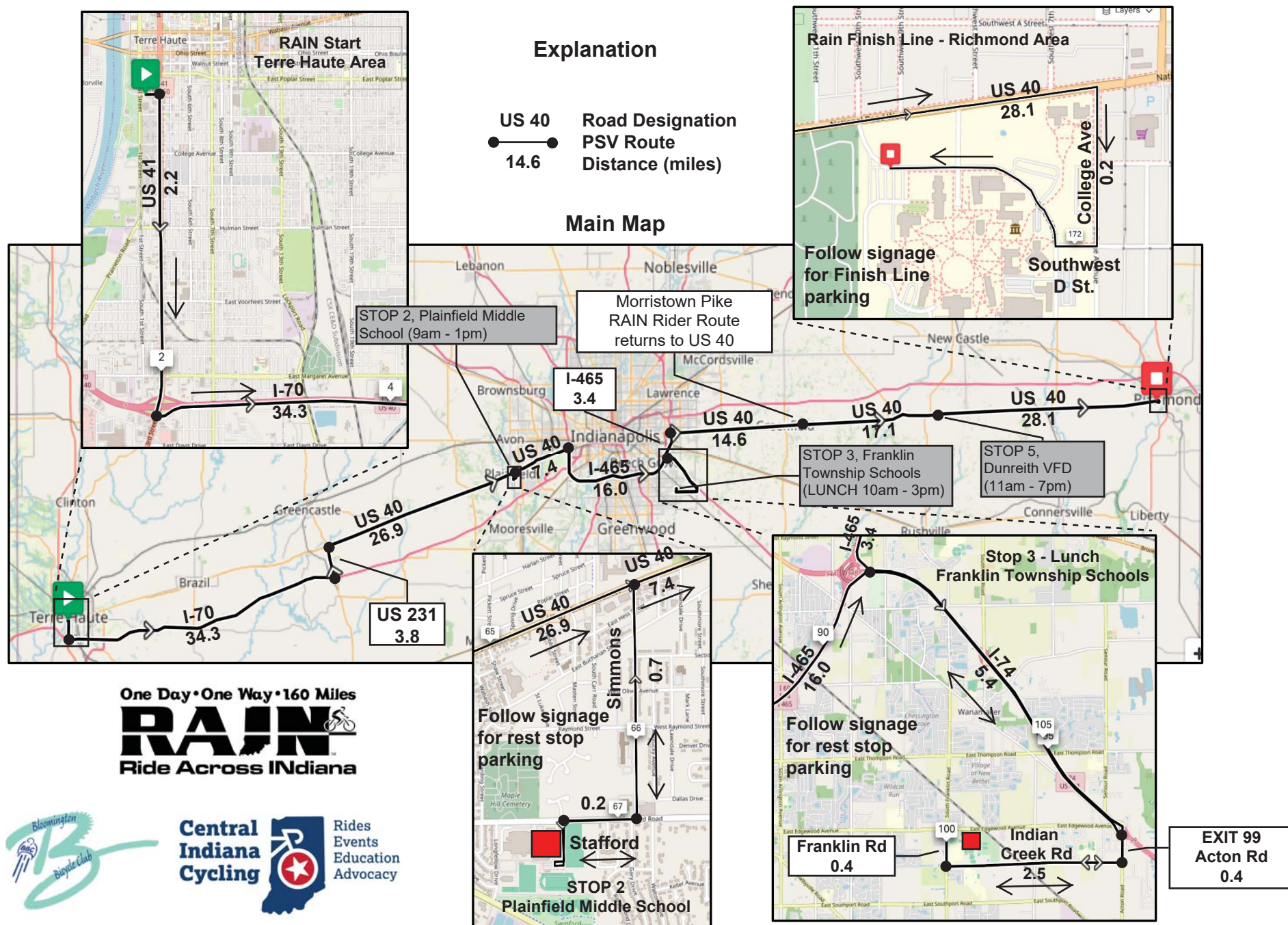
Exit the Lunch Stop in the direction you came and follow the RAIN PSV directional signs south along Franklin Road, east along Indian Creek Road, and north along Acton Road to I-74. Follow I-74 west to Post Road and exit onto Post Road. Proceed north on Post Road back north to US 40. Proceed east on US 40 to Greenfield. Do not follow the bikes east along Edgewood Avenue.

**Rest Stop 4** – Rider Mile 109, City of Greenfield Brandywine Park. PSVs ARE NOT ALLOWED AT STOP 4 DUE TO LIMITED PARKING AND THE NARROW COUNTY ROADS IN THE AREA. The RAIN route rejoins US 40 at Morristown Road on the east side of Greenfield. This is shortly after riders have left Rest Stop 4, and you may meet your rider anywhere along US 40 at this point. Please meet your rider after he/she returns to US 40 east of Greenfield. Then, follow US 40 east to Dunreith.

**Rest Stop 5** – Rider Mile 127, Dunreith Fire Station. The Dunreith Fire Station rest stop is one-half mile east of the SR 3 / US 40 junction. Limited parking is available at the fire station. Please park in the lot before the fire station, or proceed past the fire station and park in the lot east of the fire station, or along the shoulder of US 40. Follow US 40 east from Dunreith to the RAIN Finish Line at Earlham College.

**RAIN Finish** – Rider Mile 155, Earlham College, Richmond. Riders will be directed to the RAIN Finish Line located at the Main Entrance to Earlham College. PSVs will continue past the rider turn off, turn right onto College Avenue, and turn right again onto Southwest D Street into the Earlham College Campus. Ample parking is available on campus close to the finish line. See [RAIN Finish Map](#).

## RAIN 2025 Personal Support Vehicle (PSV) Map



[Return to PSV Guide](#)







US 150  
Ohio St.

First Street

Oak St.

Vigo County  
Gov  
Annex Building

### RAIN Start Fairbanks Park Terre Haute

-  RAIN Route
-  Saturday  
Traffic Flow
-  RAIN Queue  
Line
-  Bike Path to  
Queue Line

0 Feet 500

US 41

Farrington St.

Dresser Dr.

Portalets

RAIN  
Start

Rider  
Drop Off

Overnight  
Parking  
and Saturday  
PSV Parking

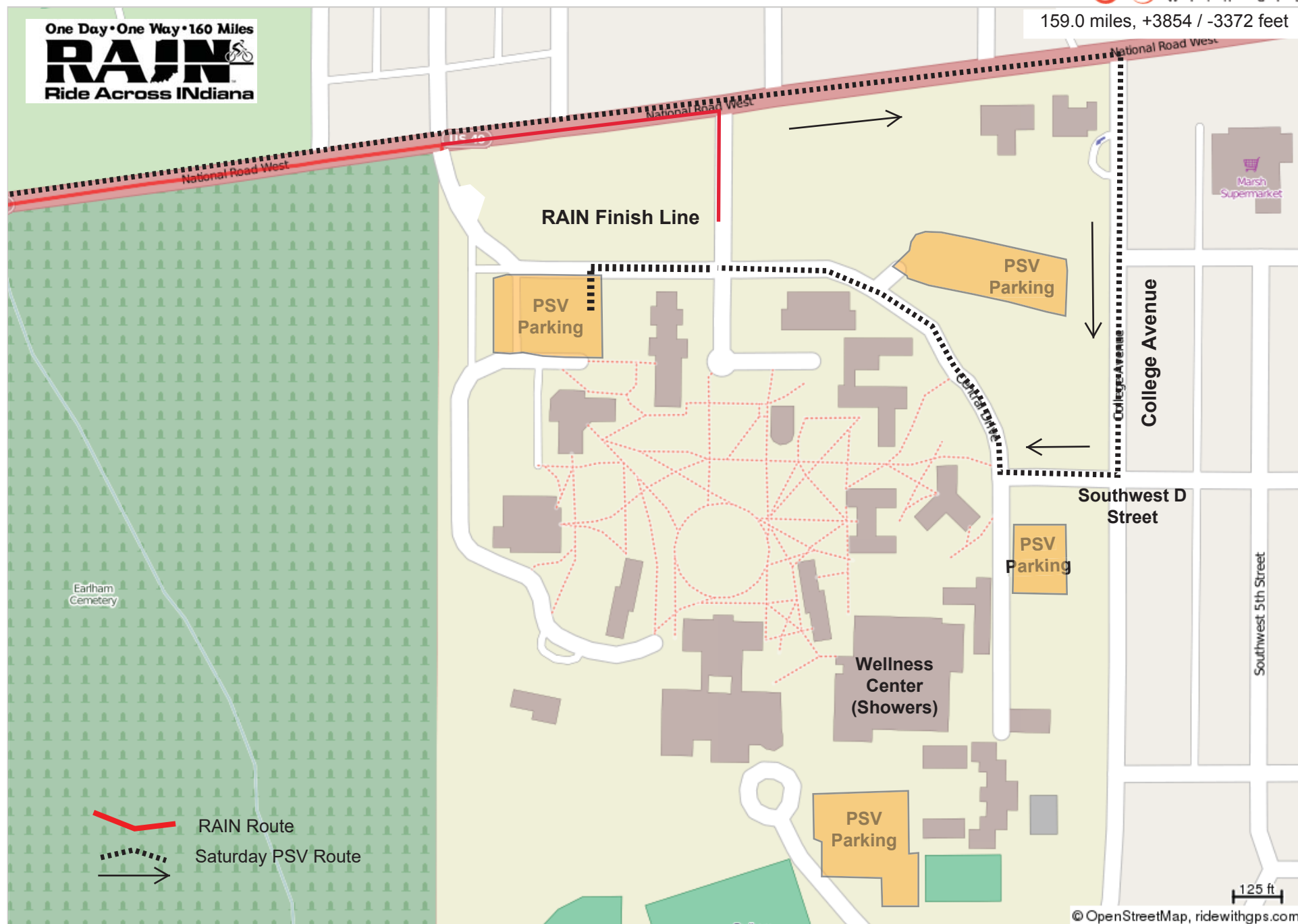
Bathrooms

YMCA  
Registration

[Return to PSV Guide](#)



# RAIN 2024 - Finish Line PSV Route



[Return to PSV Guide](#)