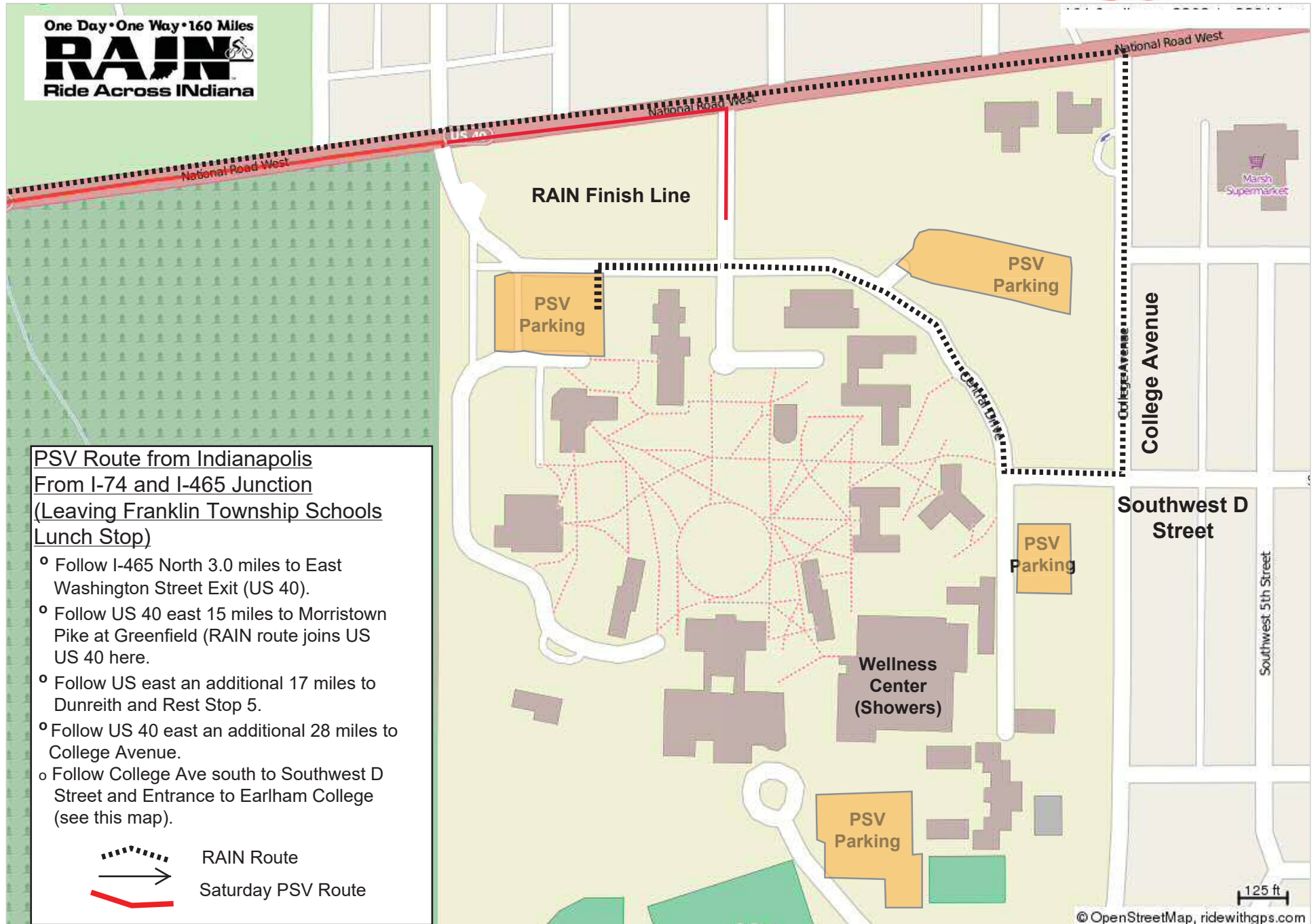


# RAIN 2022 Earlham Finish Line PSV Route



**PSV Route from Indianapolis**  
From I-74 and I-465 Junction  
(Leaving Franklin Township Schools Lunch Stop)

- Follow I-465 North 3.0 miles to East Washington Street Exit (US 40).
- Follow US 40 east 15 miles to Morristown Pike at Greenfield (RAIN route joins US US 40 here).
- Follow US east an additional 17 miles to Dunreith and Rest Stop 5.
- Follow US 40 east an additional 28 miles to College Avenue.
- Follow College Ave south to Southwest D Street and Entrance to Earlham College (see this map).