



RAIN 2016

PSV Tips and Instructions

The following tips and instructions are provided for Personal Support Vehicle (PSV) operators to assist in navigation from Terre Haute to Richmond during the course of the RAIN event. These instructions are organized chronologically, and it is suggested that you keep a copy for reference in your vehicle.

GPS files are available at: <https://ridewithgps.com/events/17920-rain-2016-thirtieth-anniversary>

RAIN Start – Arrive at St. Mary-of-the-Woods College (SMWC) early and drop your rider off or park in designated areas. [See Map 1](#). These areas are close to both the Saturday morning packet pickup area and the RAIN Starting Line. Do not drop your rider off or park along US 150 near St. Mary's Road. This creates visibility problems and traffic congestion at the Start, and is frowned upon by on-site law enforcement. Use the North Entrance to SMWC, not the Main Entrance on St. Mary's Road. One-way traffic will be maintained along campus roadways to facilitate traffic entry / exit prior to the start of the event.

After the start of RAIN, please exit SMWC north on US 150 along the designed PSV route. [See Map 2](#). Do not follow your rider on the route through Terre Haute as this creates added congestion on city streets. The PSV route is south on SR 63 and US 41 (Third Street) to I-70. Following this route, you will pass the large number of motor lodges near the US 41 / I-70 interchange. If you are staying in this area, consider dropping your rider off at SMWC for the 7:00 RAIN start and then returning to your lodging for a leisurely checkout. You will have plenty of time to meet your rider at Rest Stop 1.

From the US 41 interchange, follow I-70 east 34 miles east to the US 231 interchange. Exit north on US 231 and proceed north 3.5 miles to Rest Stop 1 on the right side of the road.

Rest Stop 1 – Rider Mile 39 South Putnam High School. This stop is located at the US 40 and US 231 intersection. Ample parking is available in the school parking lots. PSVs and Riders will enter and exit Stop 1 at different locations. PSVs will enter Rest Stop 1 from US 231. [See Map 3](#). Follow signs to the parking lots on school property where you may meet your rider. Please do not park along the US 40 or US 231 roadway or shoulders near the rest stop as this may obstruct traffic and rider visibility. PSVs may follow US 40 east from Rest Stop 1 to Plainfield and Rest Stop 2.

Rest Stop 2 – Rider Mile 64, Plainfield Middle School. PSVs and Riders will approach Rest Stop 2 along different routes. [See Map 4](#). In Plainfield, PSVs will continue east on US 40 past the rider turnoff at East Street. PSVs will turn right on Simmons Street and follow the signed route to Rest Stop 2 along Simmons and Stafford Streets to enter the stop from the east. Ample parking is available in the school parking lots. [See Map 5](#). Park only in the designated areas on

school property. You may meet your rider at this point. Exit Rest Stop 2 in the direction you came and follow the RAIN PSV directional signs back to US 40. PSVs ARE NOT PERMITTED ON THE RAIN ROUTE EAST OF PLAINFIELD due to the narrow nature of the rural roadways.

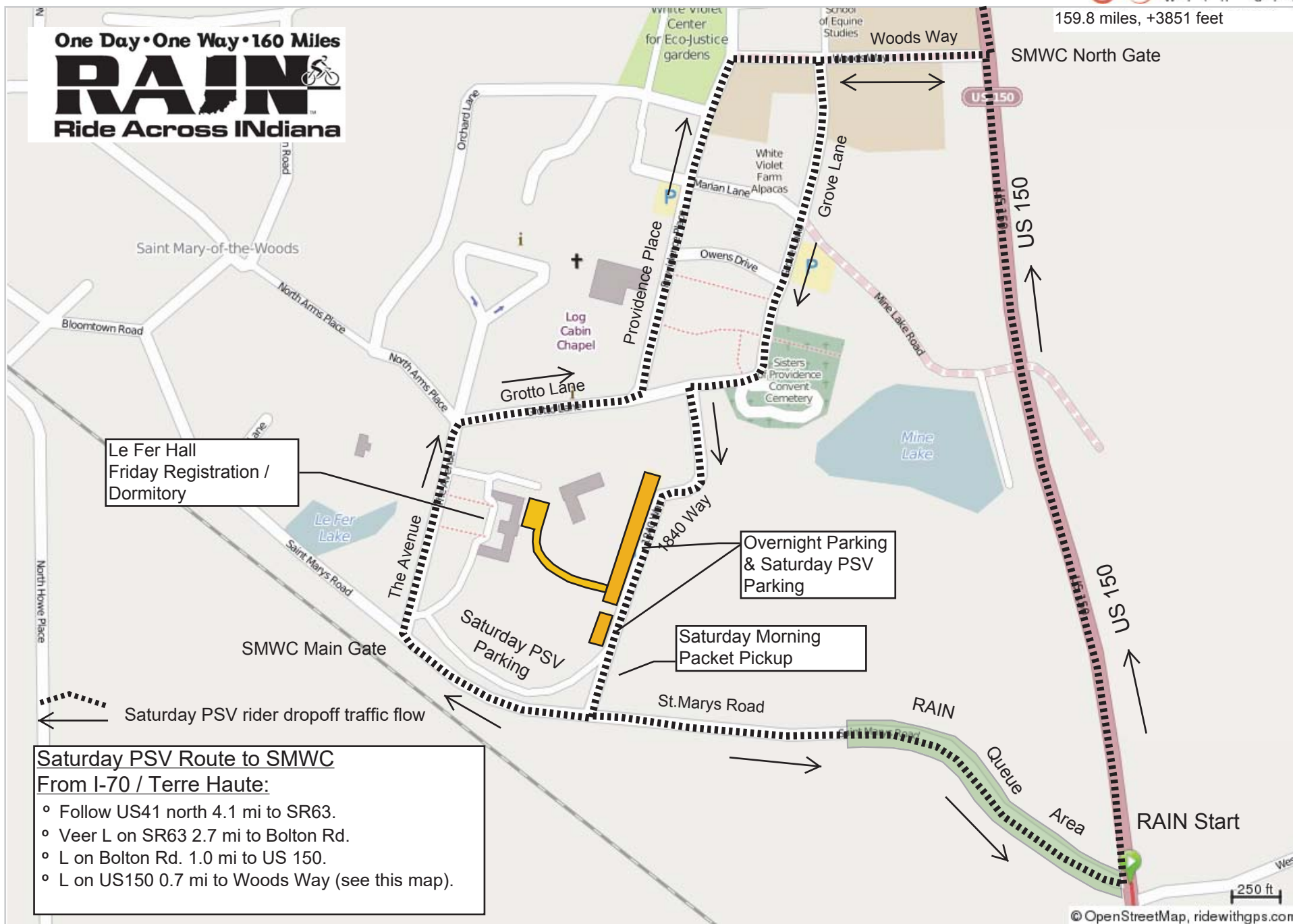
Lunch Stop – Rider Mile 93, Franklin Township Schools. From Plainfield, follow US 40, I-465, and I-74 to and around Indianapolis. Exit I-74 at Exit 99 (Acton Road) and follow RAIN PSV directional signs along Acton Rd, Indian Creek Rd, and Franklin Rd to the Lunch Stop. [See Map 6](#). Ample parking is available in the school parking lots. Park only in the designated areas on school property. You may meet your rider for lunch at this point. [See Map 7](#). Exit the Lunch Stop in the direction you came and follow the RAIN PSV directional signs back to I-74.

Rest Stop 4 – Rider Mile 114, City of Greenfield Brandywine Park. PSVs ARE NOT ALLOWED AT STOP 4 DUE TO LIMITED PARKING AND THE NARROW COUNTY ROADS IN THE AREA. From the Lunch Stop, follow I-74 back to I-465 and proceed north on I-465 to US 40. Proceed east on US 40 to Greenfield. The RAIN Route rejoins US 40 at Morristown Road on the east side of Greenfield. This is shortly after riders have left Rest Stop 4, and you may meet your rider anywhere along US 40 at this point. Please meet your rider after he/she returns to US 40 east of Greenfield. Then, follow US 40 east to Dunreith.

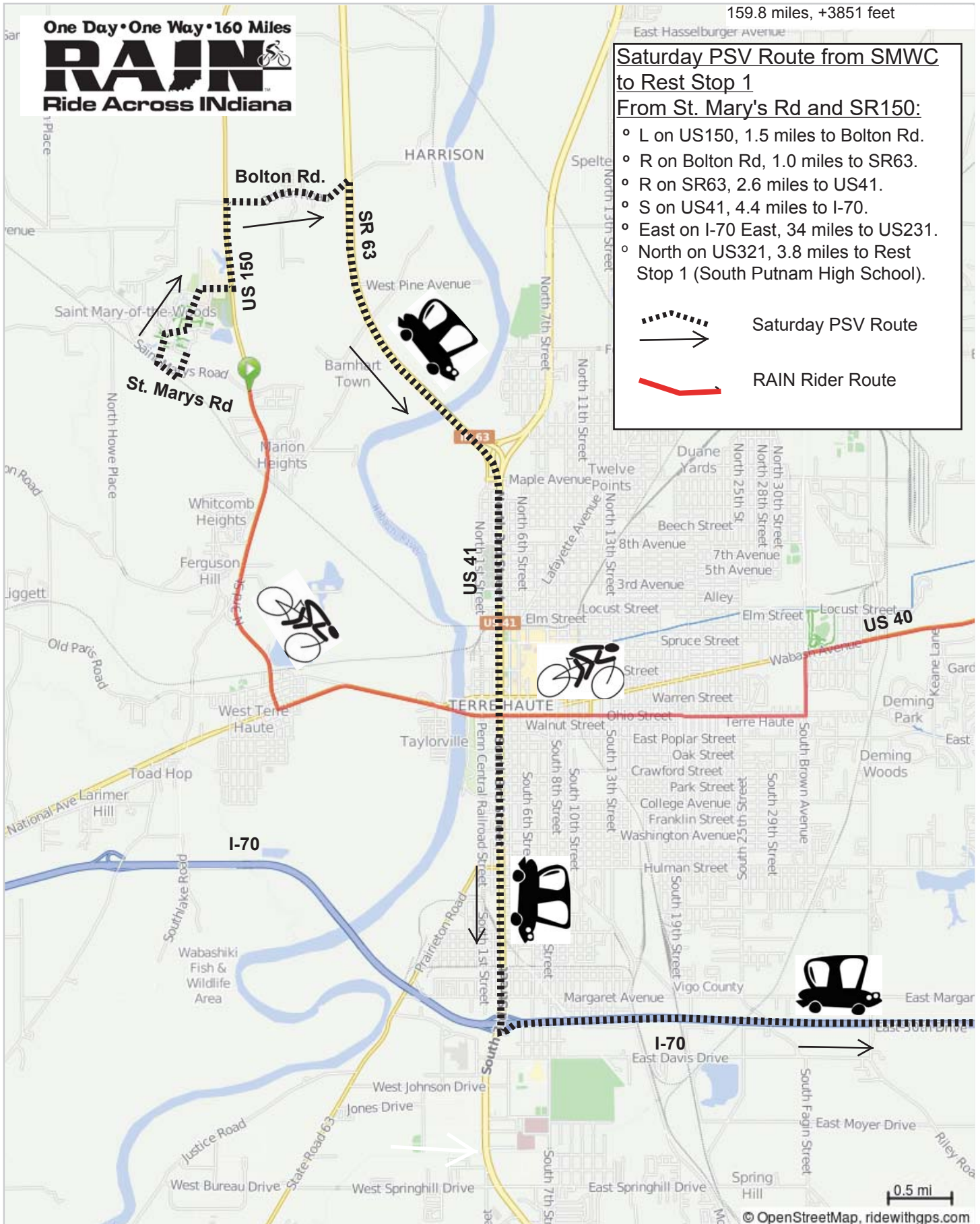
Rest Stop 5 – Rider Mile 132, Dunreith Fire Station. Limited parking is available at the fire station. Please park in the lot before the fire station, or proceed past the fire station and park in the lot east of the fire station, or along the shoulder of US 40. Follow US 40 east from Dunreith to the RAIN Finish Line at Earlham College.

RAIN Finish – Rider Mile 160, Earlham College, Richmond. Riders will be directed to the RAIN Finish Line located before the Main Entrance to Earlham College. PSVs will continue past the rider turn off and turn right into the Main Earlham College Entrance. Ample parking is available on campus close to the finish line. [See Map 8](#).

Map 1 - RAIN 2016 - SMWC PSV Route Detail

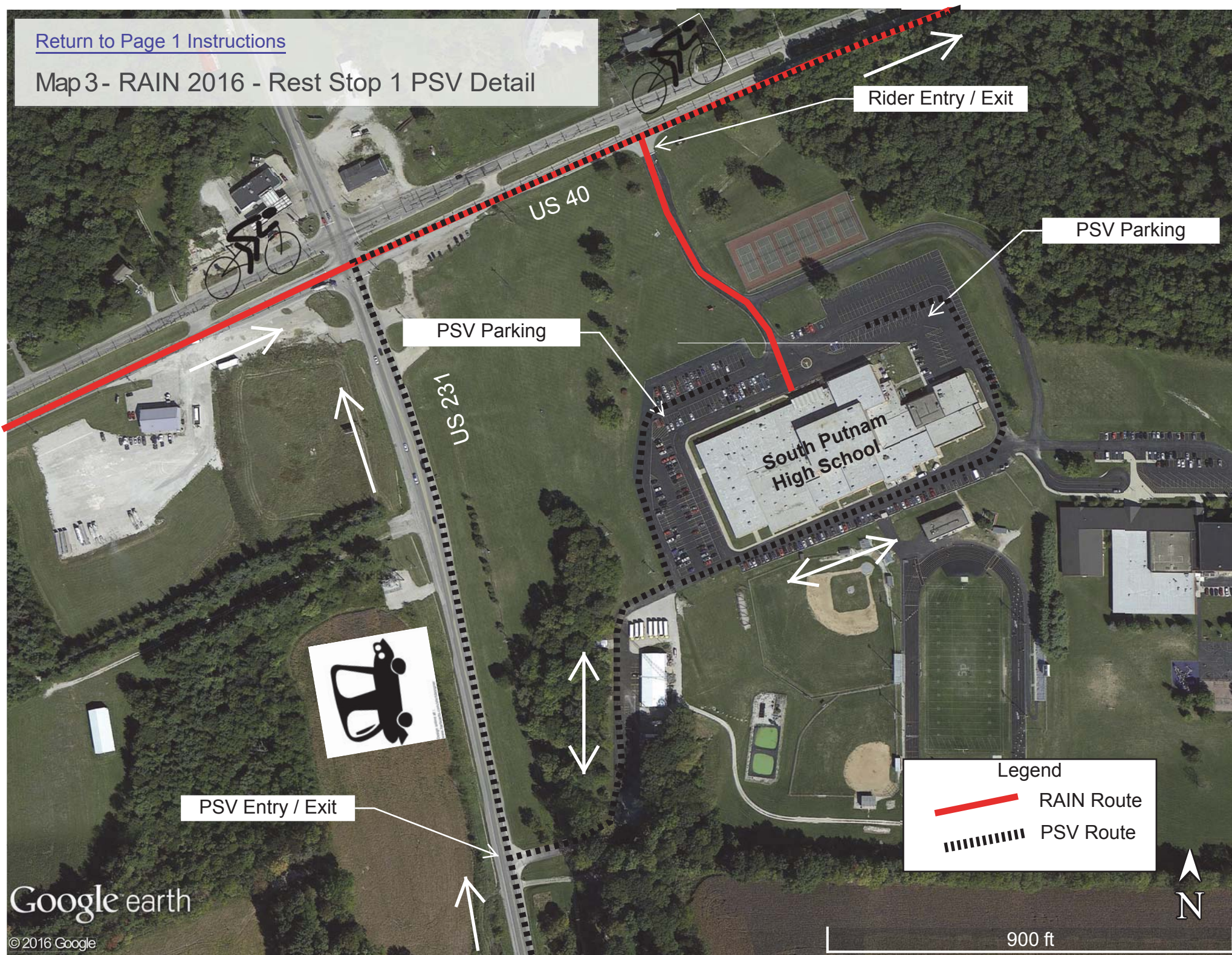


Map 2 - RAIN 2016 - Terre Haute Area PSV Route Detail

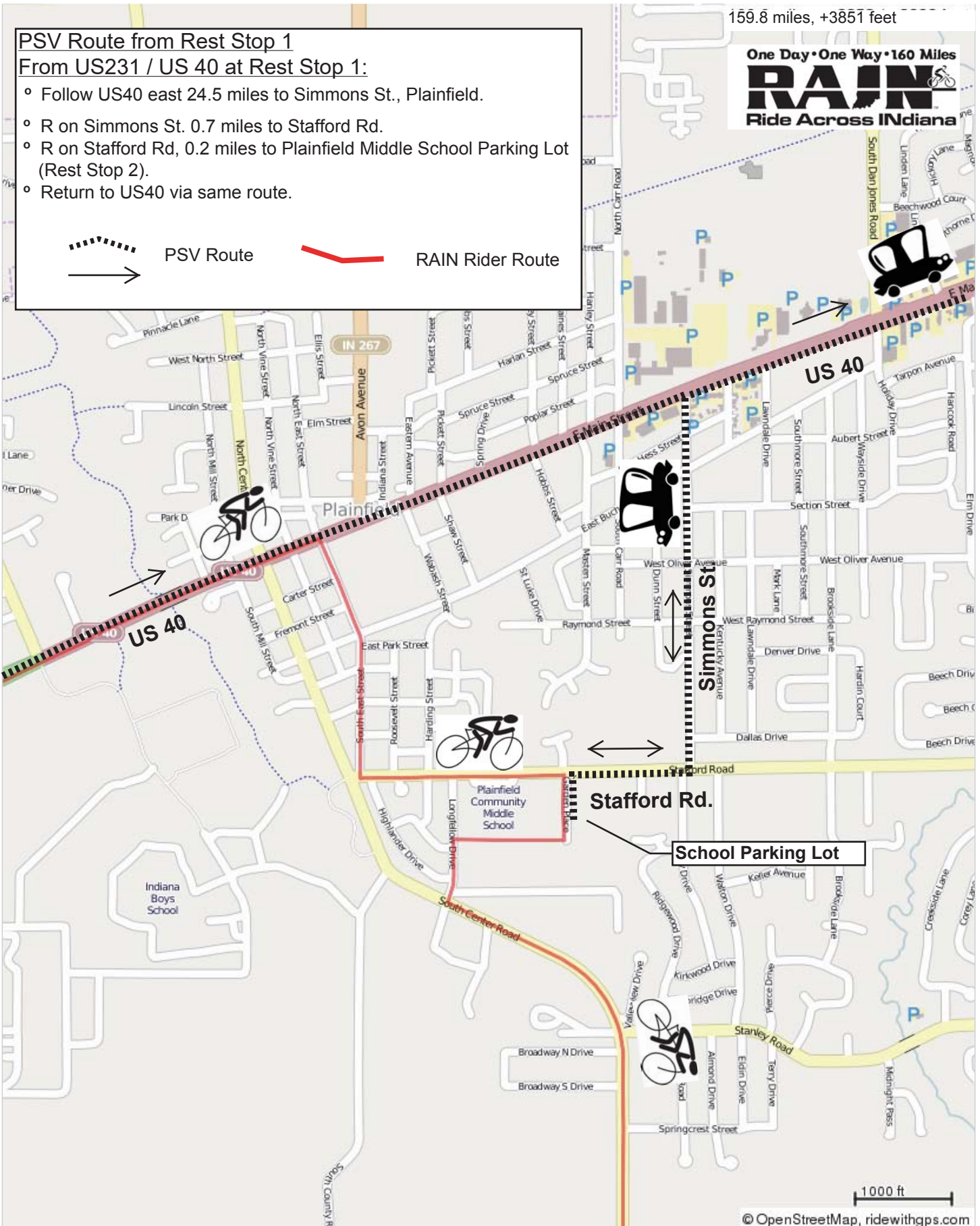


[Return to Page 1 Instructions](#)

Map 3- RAIN 2016 - Rest Stop 1 PSV Detail

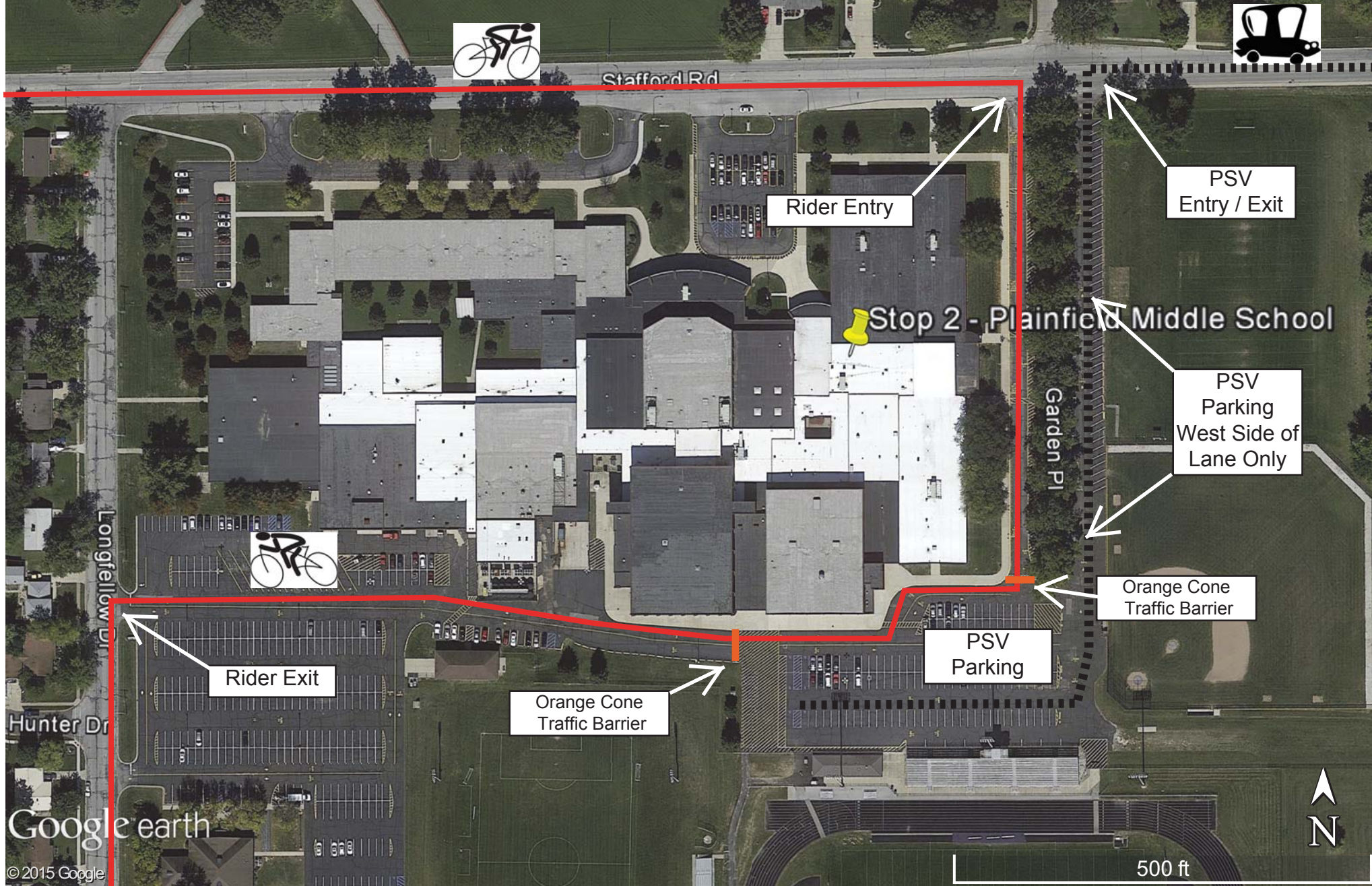


Map 4 - RAIN 2016 - Rest Stop 2 PSV Route



[Return to Page 1 Instructions](#)

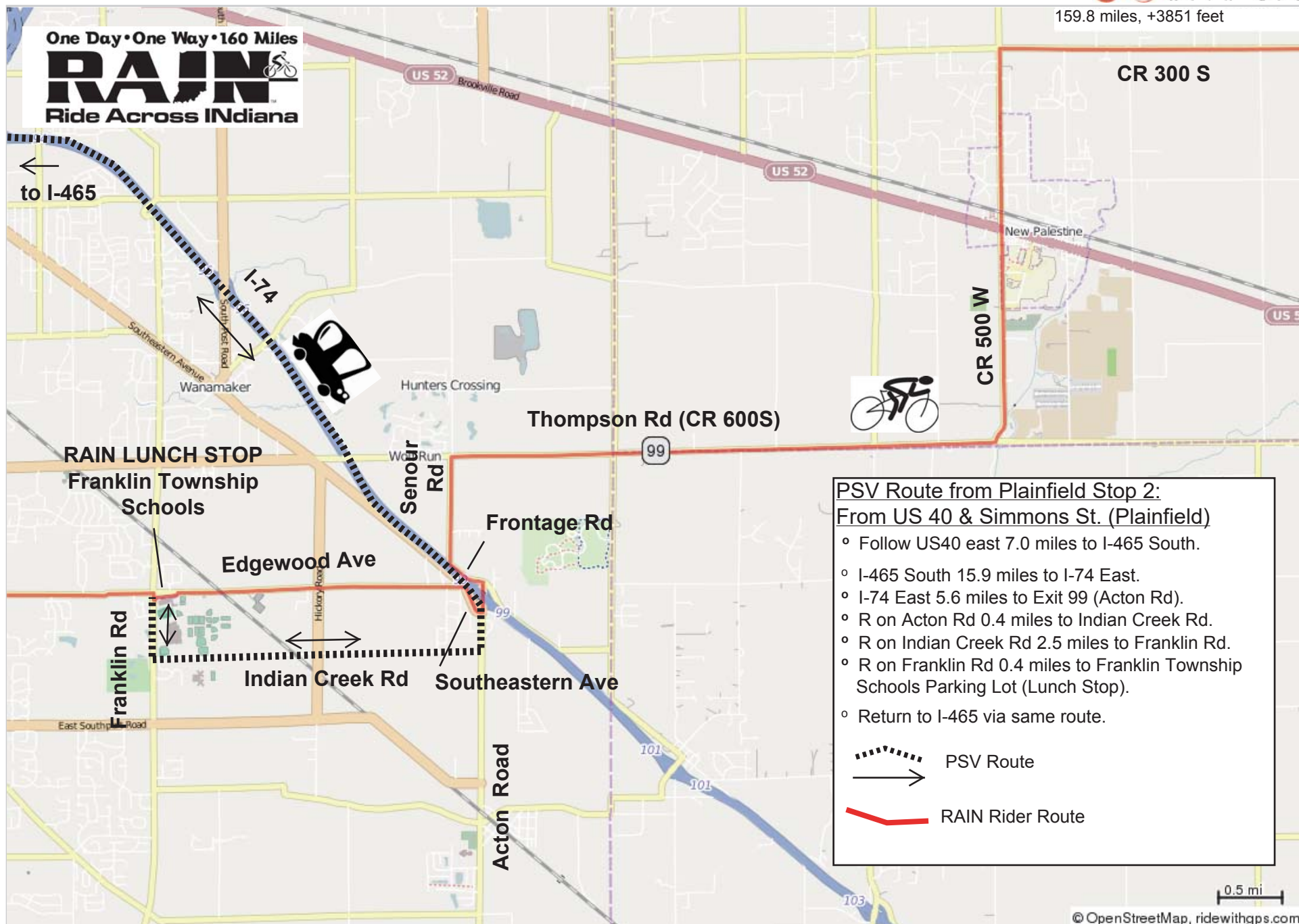
MAP 5 - RAIN 2016 - Rest Stop 2 PSV Detail



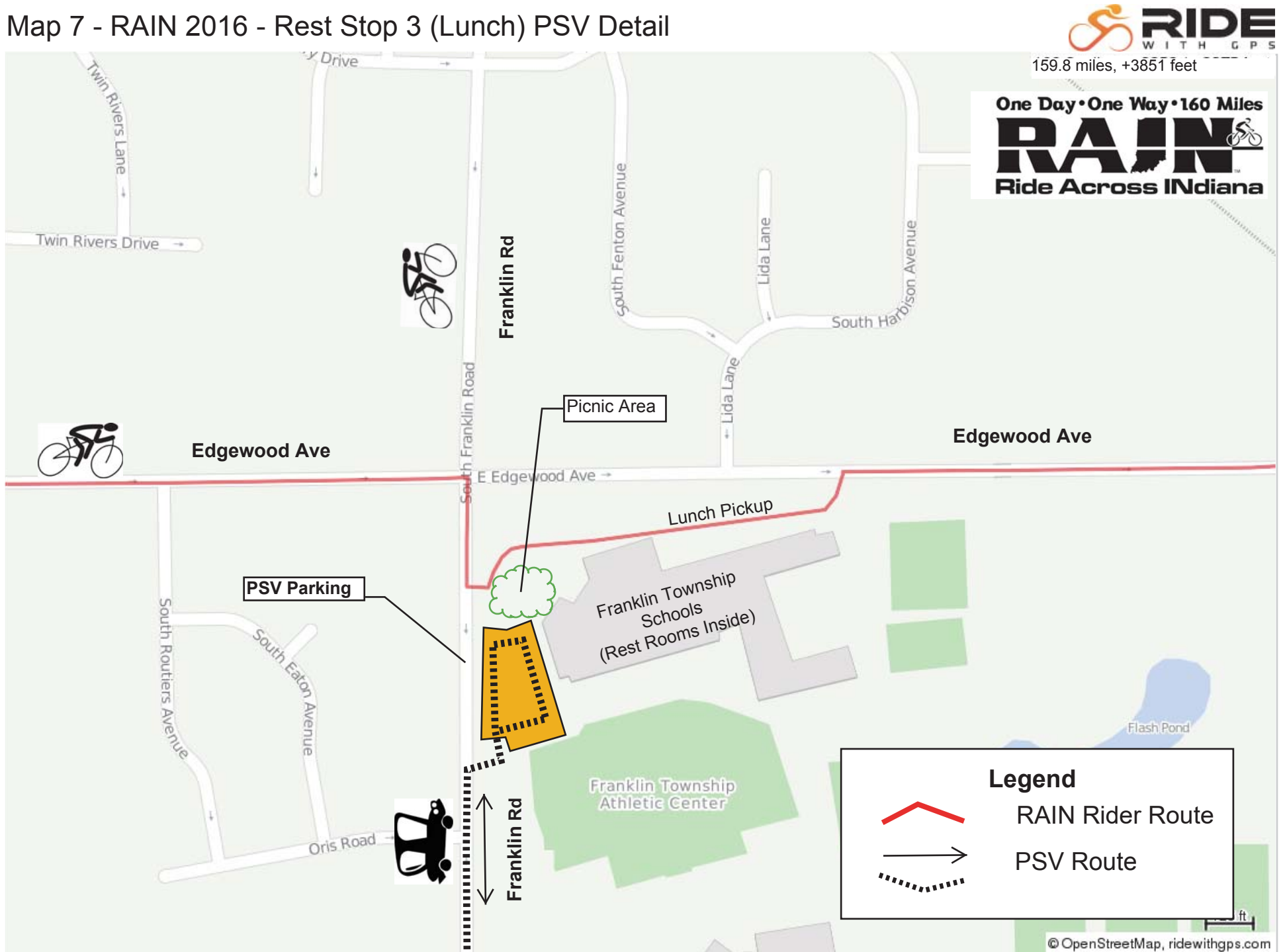
Map 6 - RAIN 2016 - Rest Stop 3 (Lunch) PSV Route Detail



159.8 miles, +3851 feet



Map 7 - RAIN 2016 - Rest Stop 3 (Lunch) PSV Detail



Map 8 - RAIN 2016 - Earlham Finish Line PSV Route Detail



159.8 miles, +3851 feet

One Day • One Way • 160 Miles
RAIN
Ride Across INdiana

